

89°W

88°W

30°N

30°N

29°N

29°N

89°W






88°W

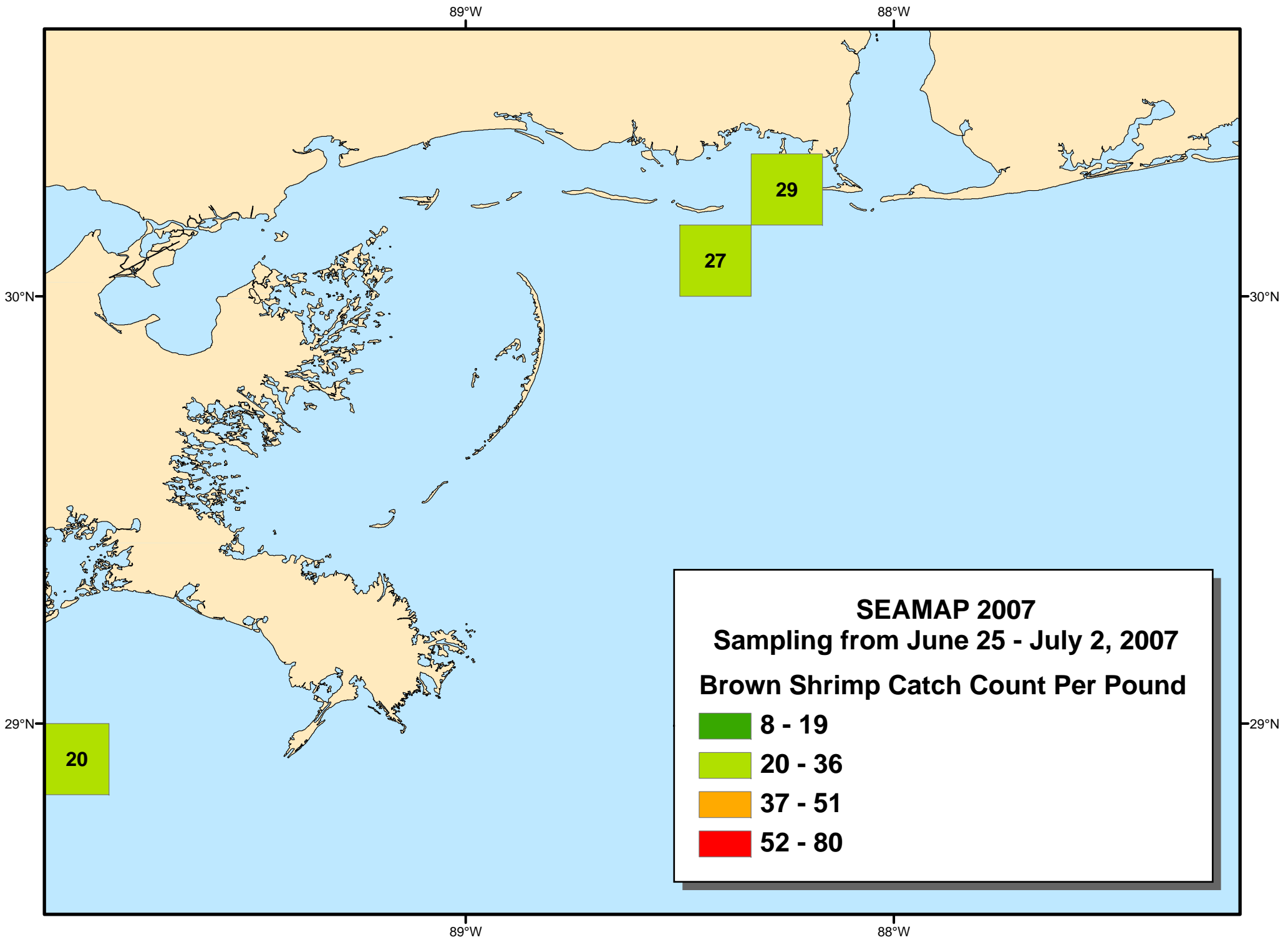
14.1

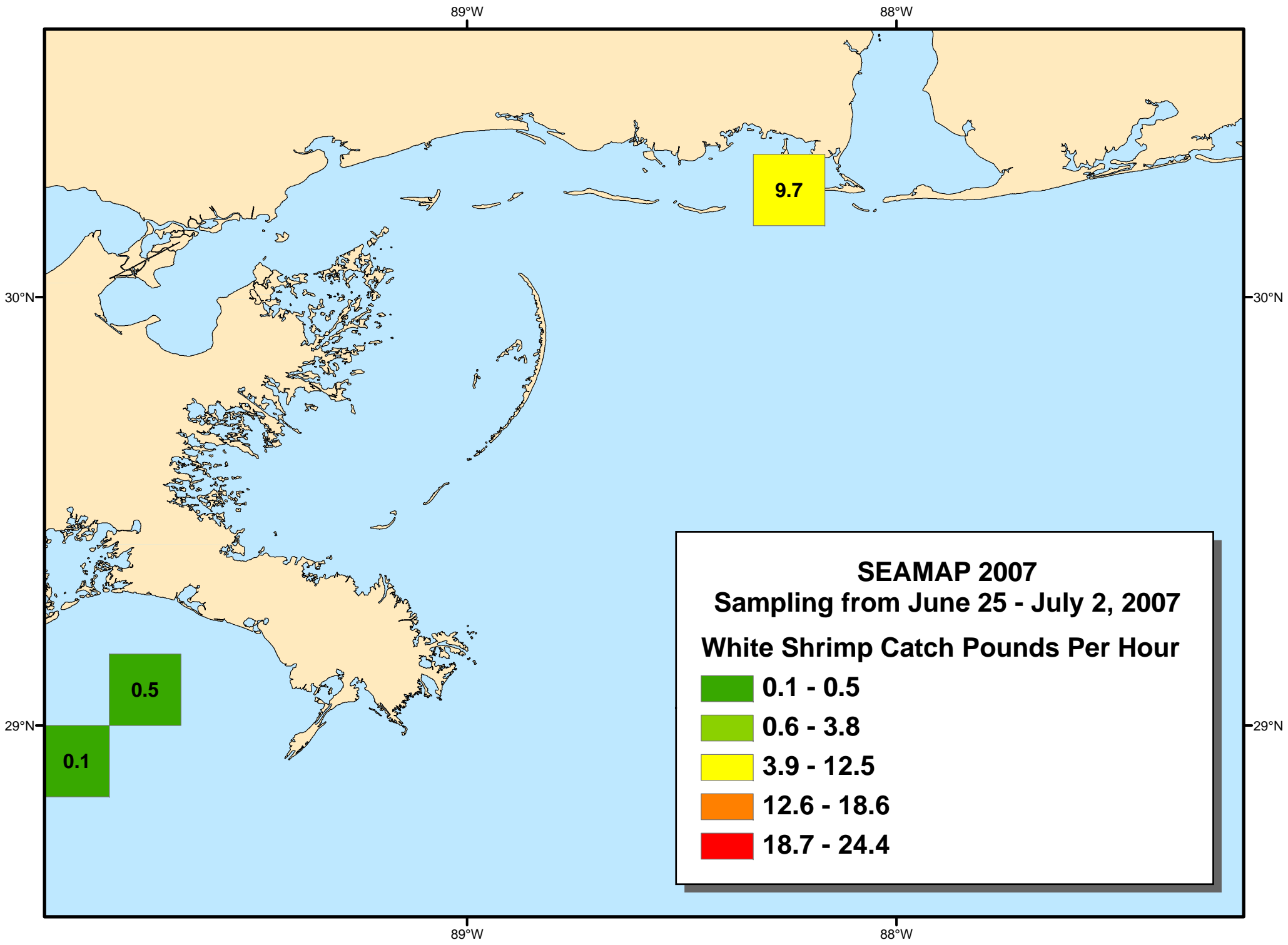
2.1

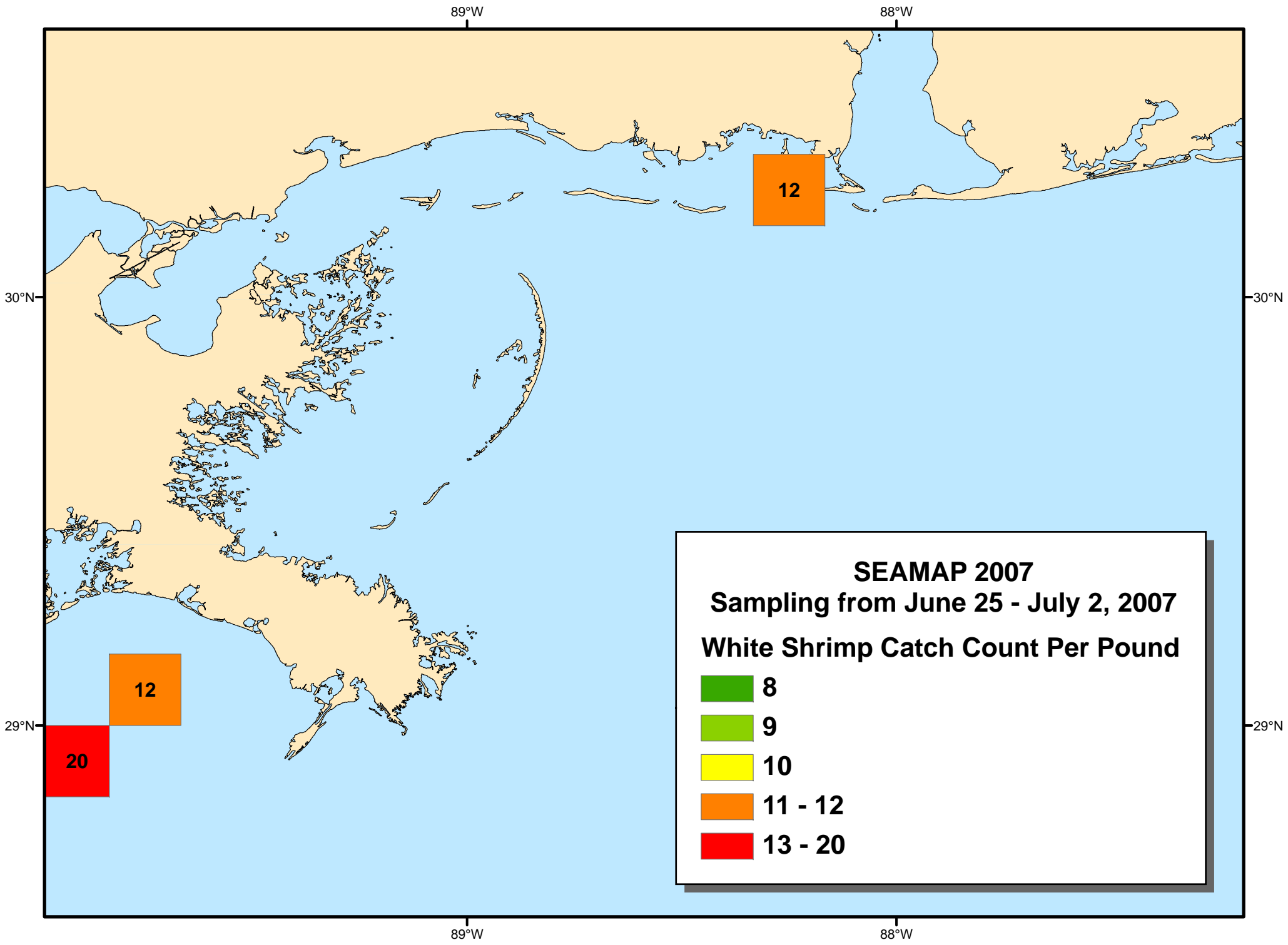
0.1

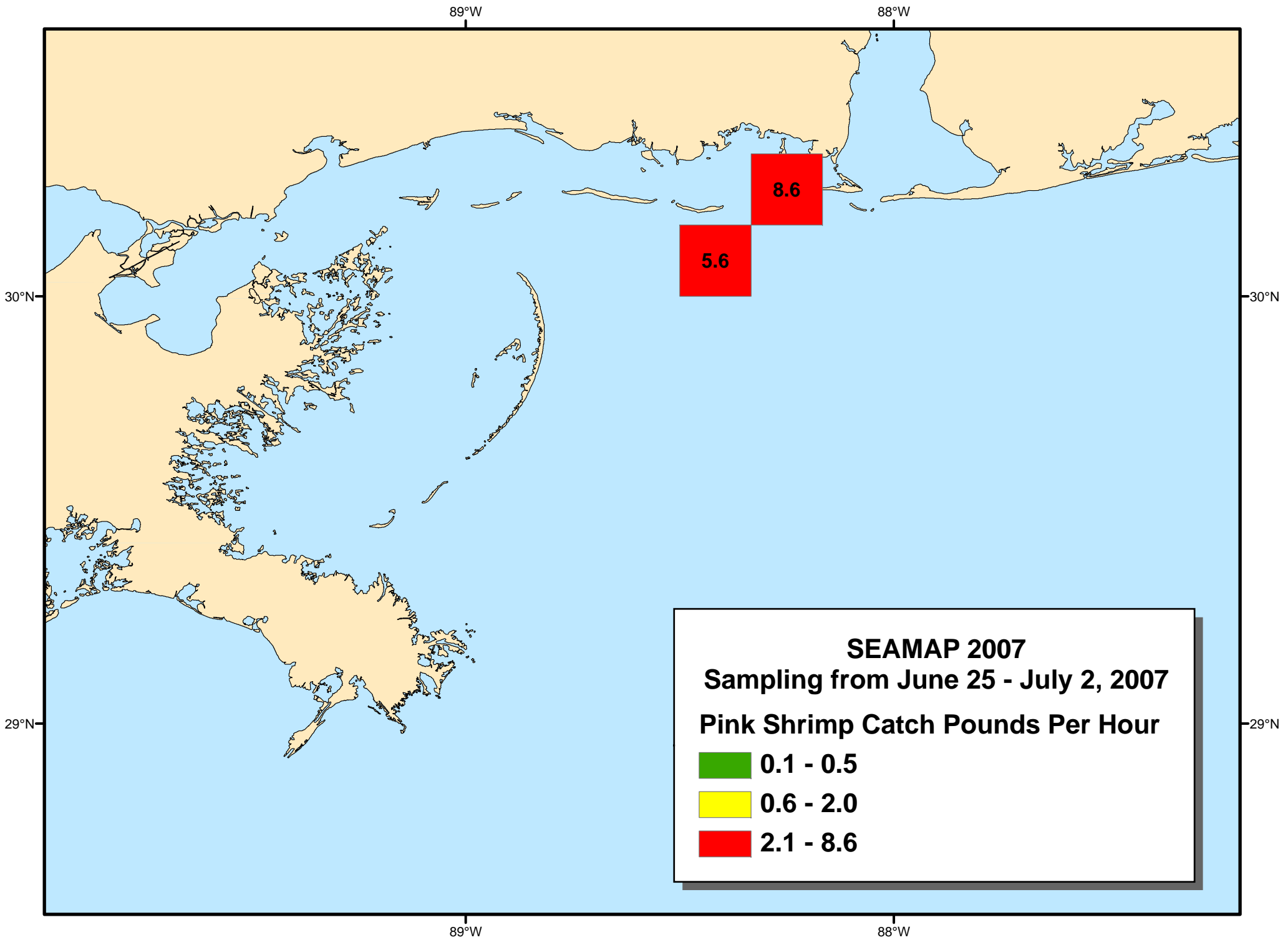
**SEAMAP 2007**  
**Sampling from June 25 - July 2, 2007**  
**Brown Shrimp Catch Pounds Per Hour**

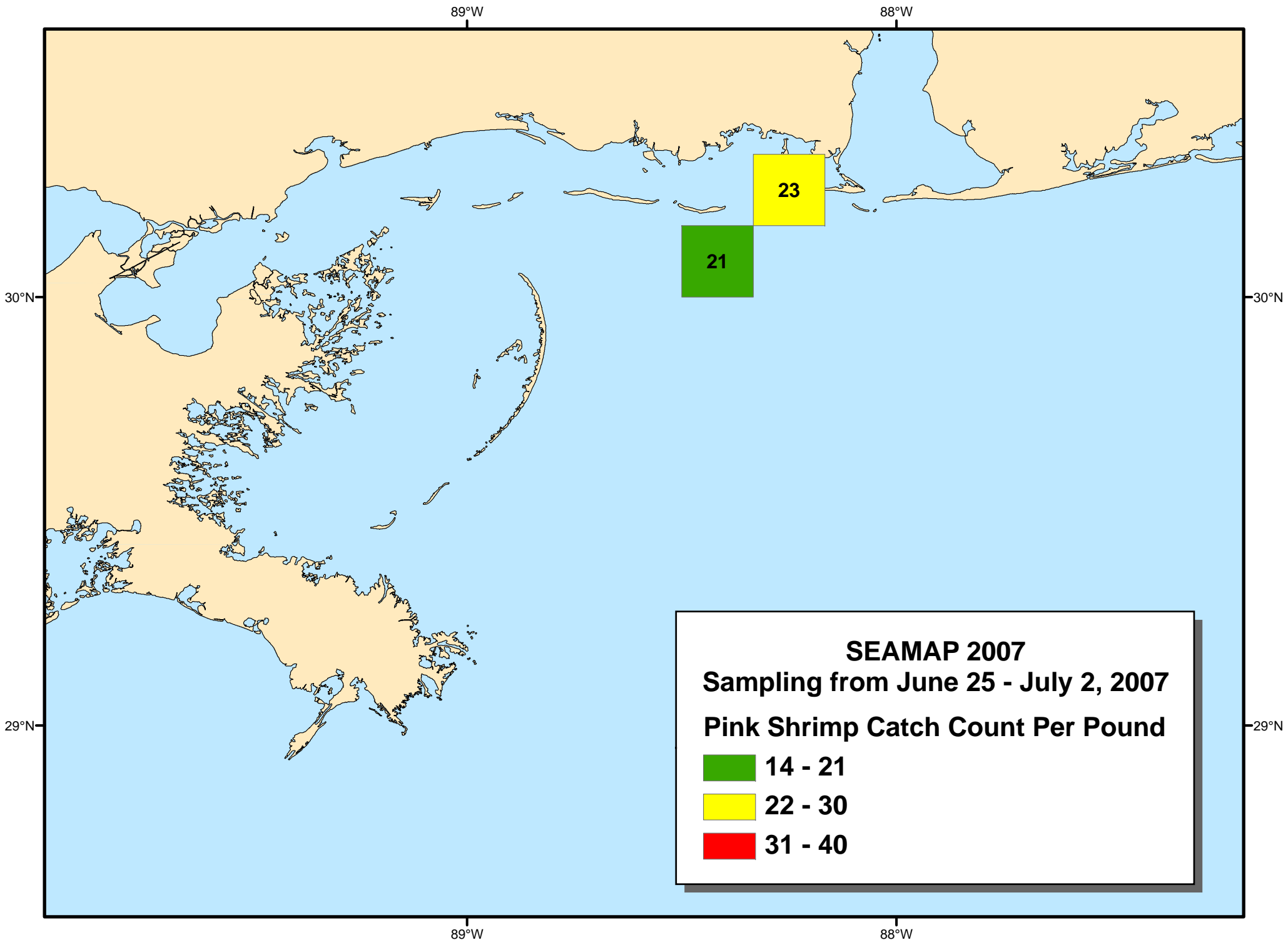
	0.1 - 2.9
	3.0 - 10.4
	10.5 - 25.6
	25.7 - 55.5
	55.6 - 103.1

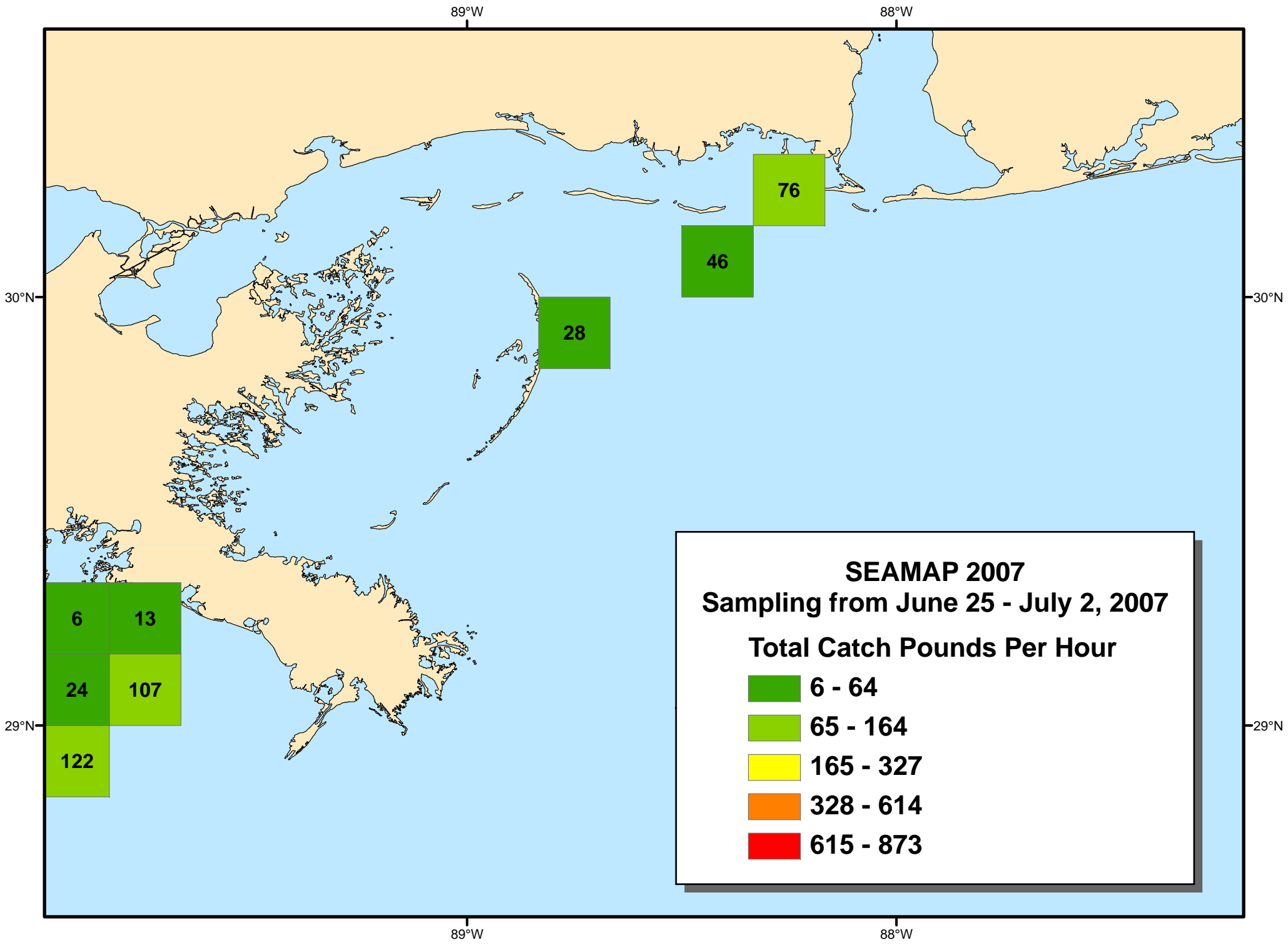




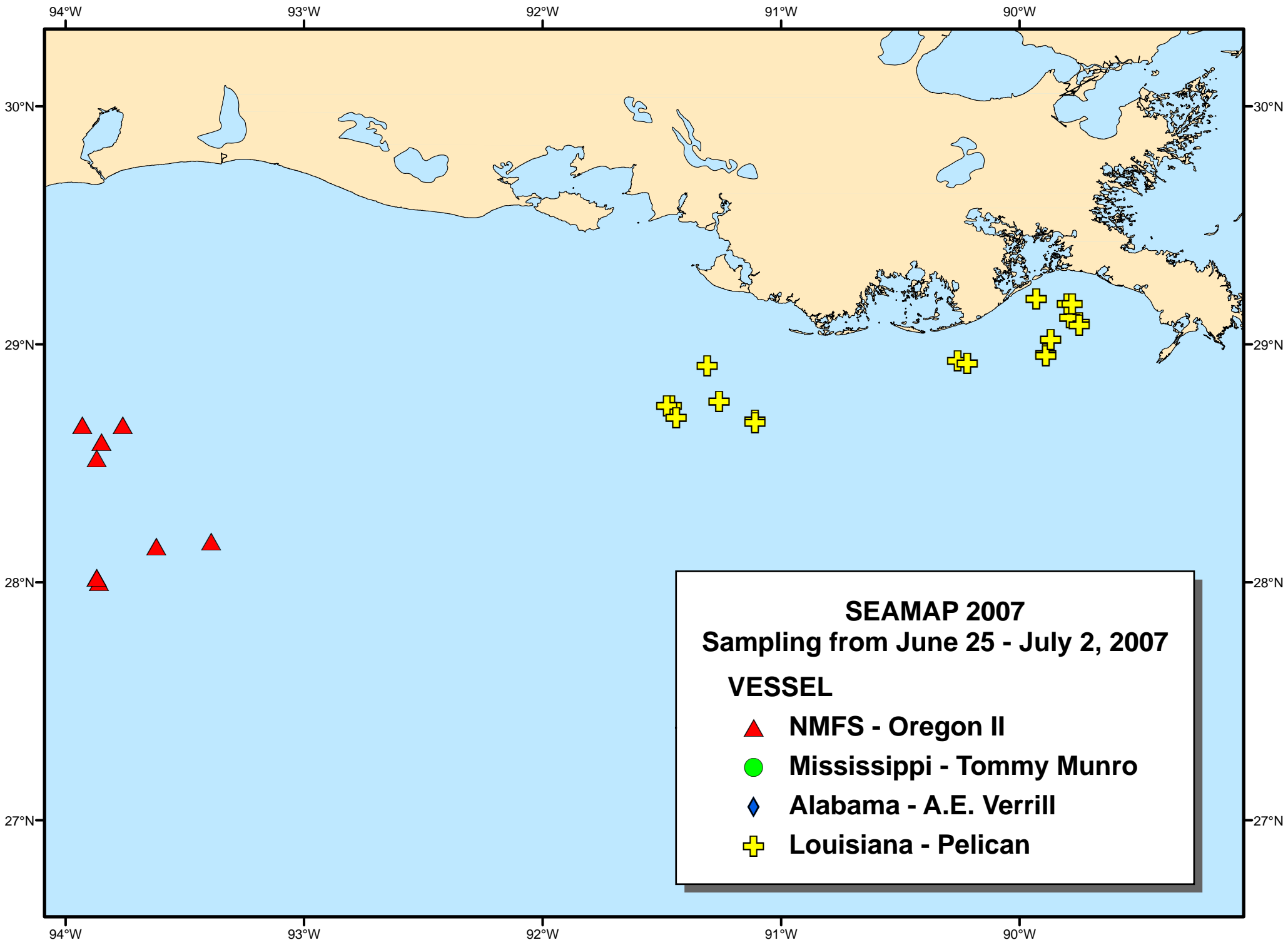








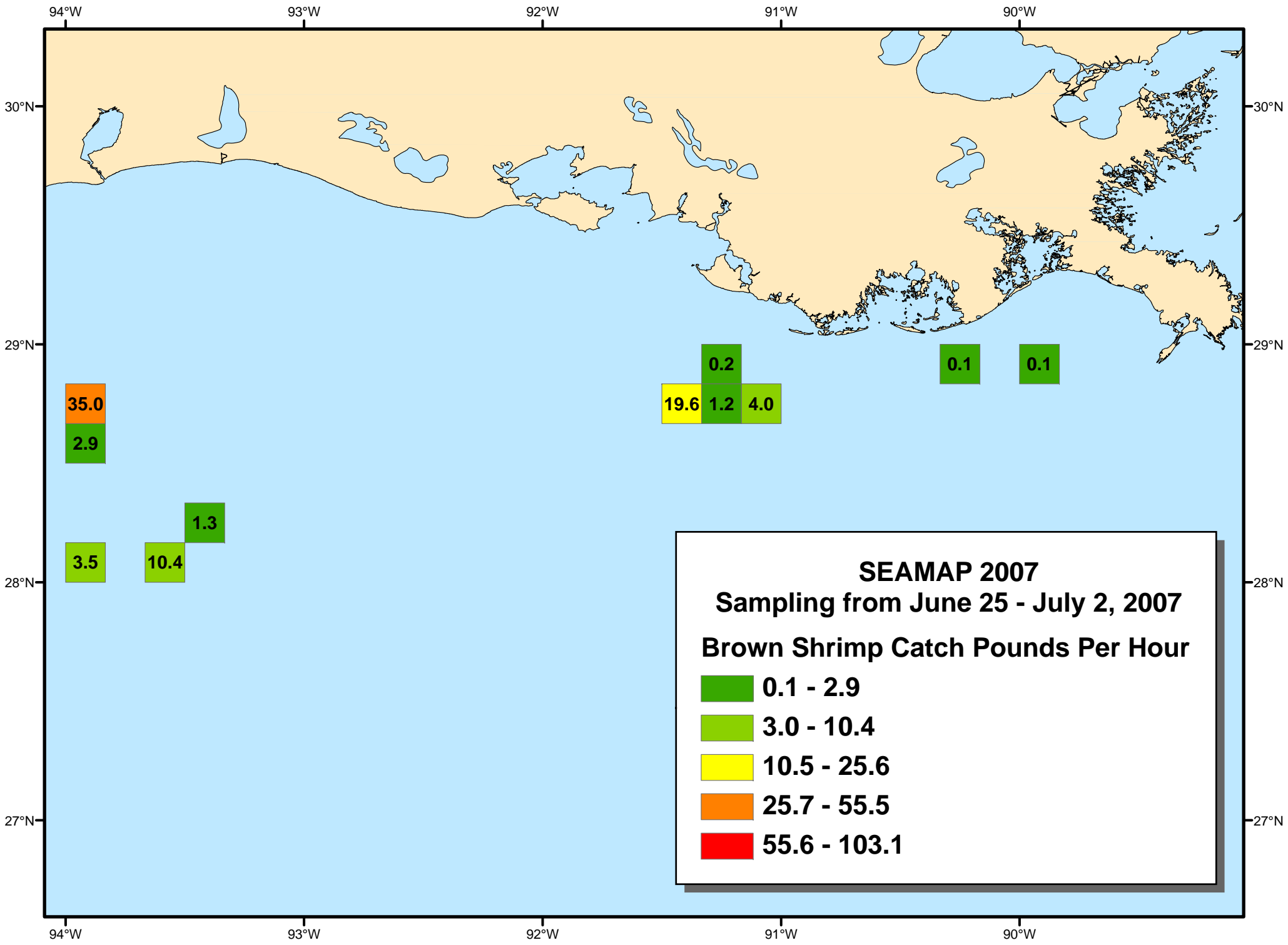


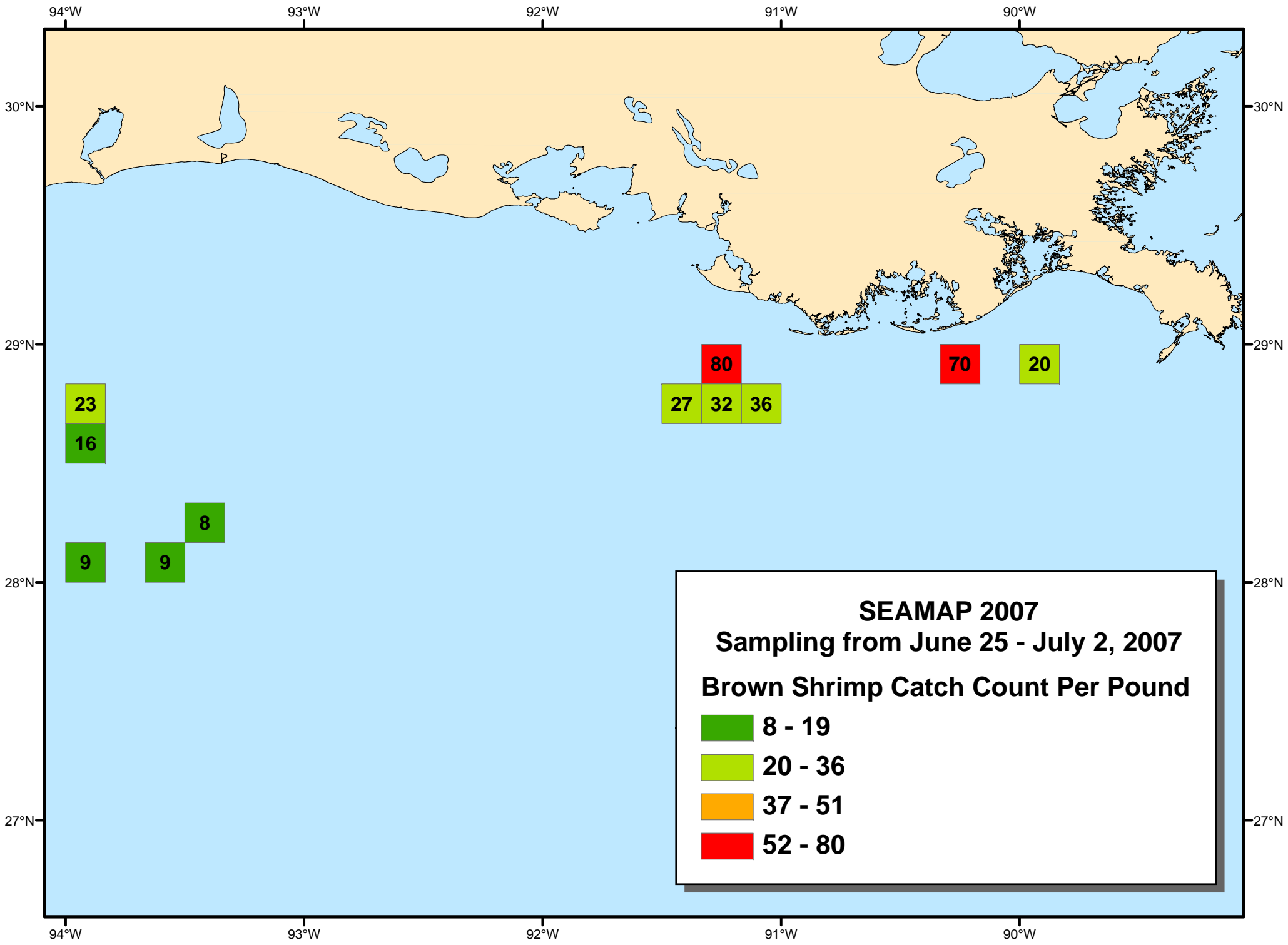


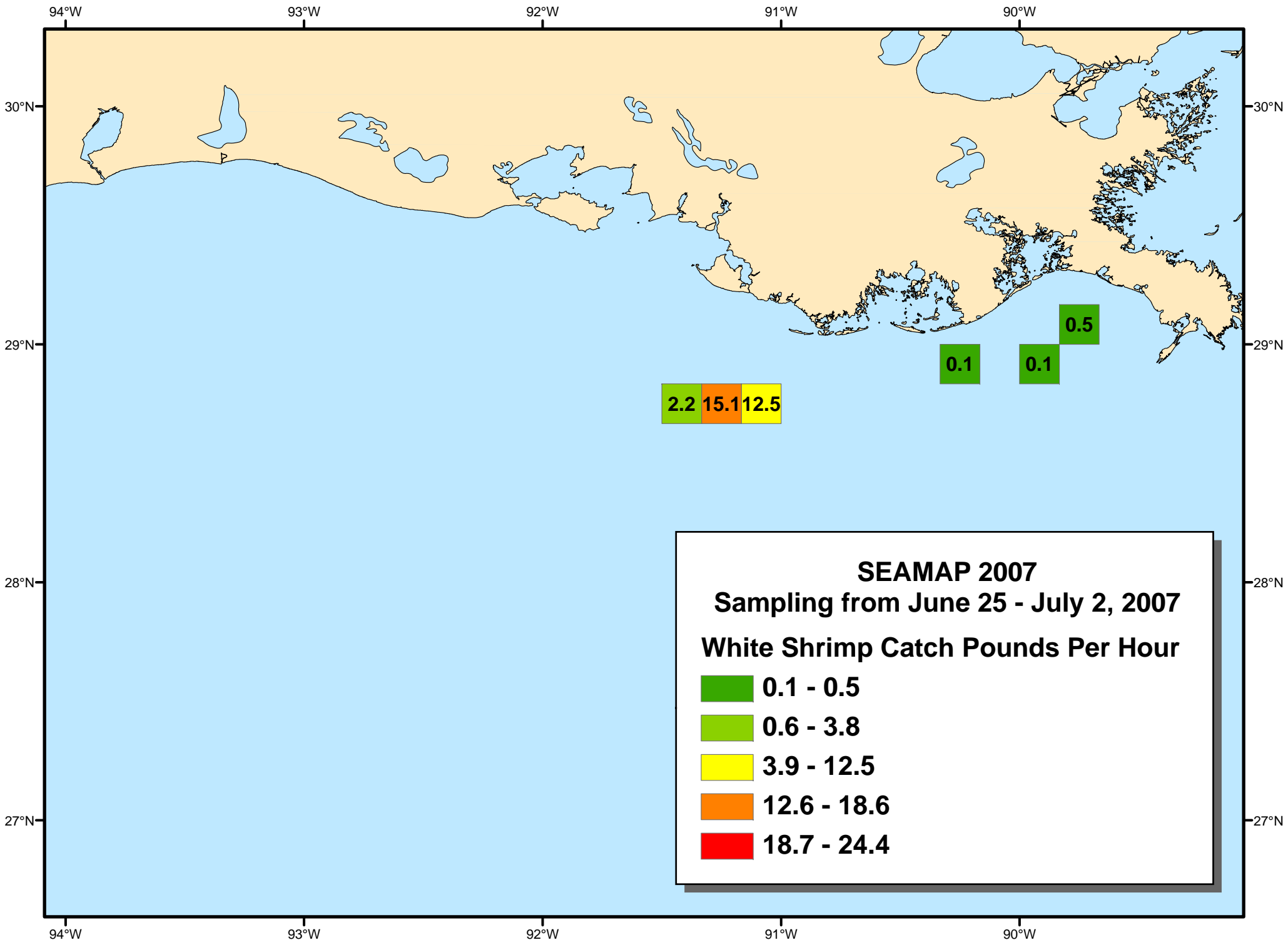
**SEAMAP 2007**  
**Sampling from June 25 - July 2, 2007**

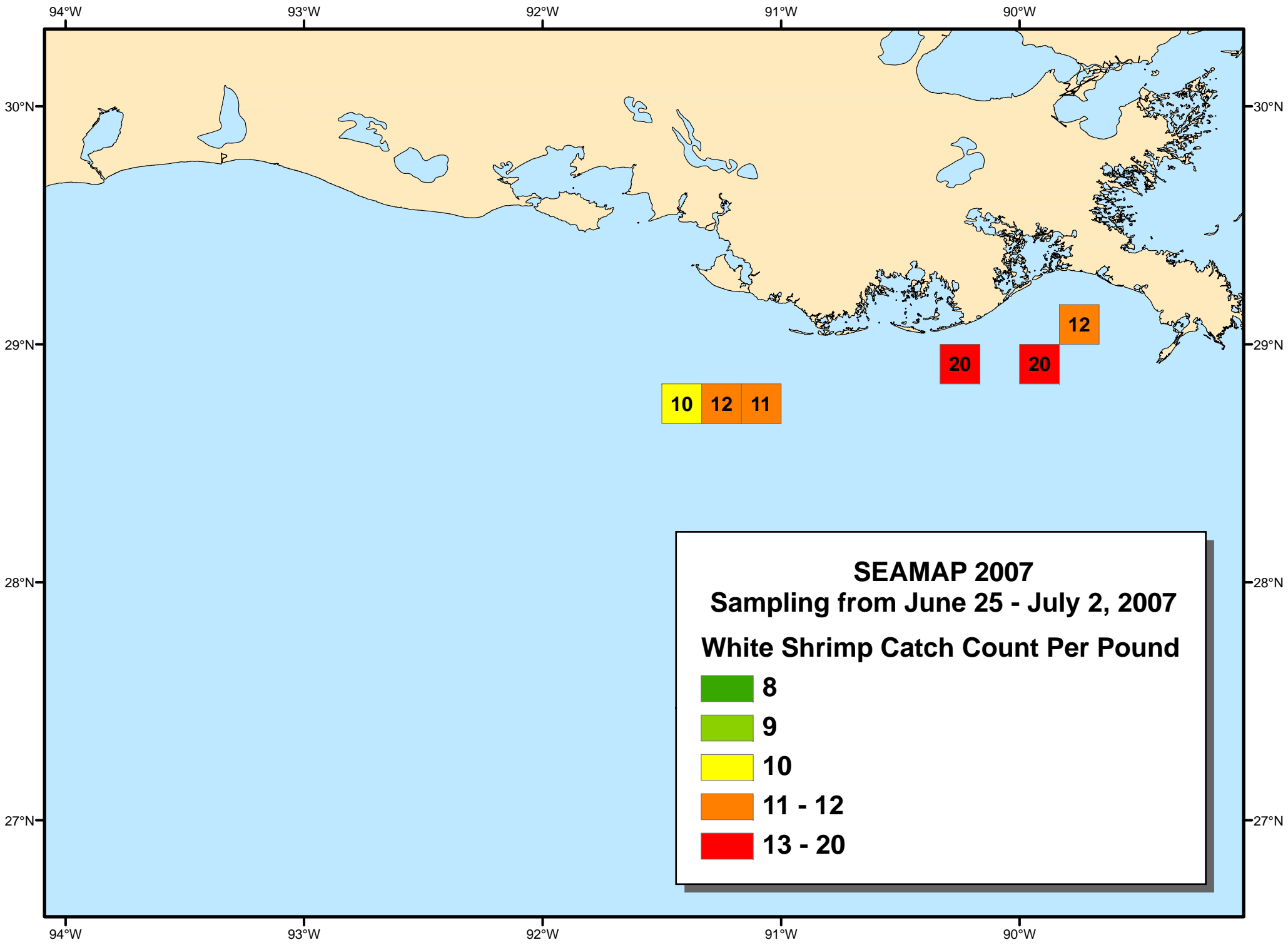
**VESSEL**

- ▲** NMFS - Oregon II
- Mississippi - Tommy Munro
- ◆** Alabama - A.E. Verrill
- +** Louisiana - Pelican







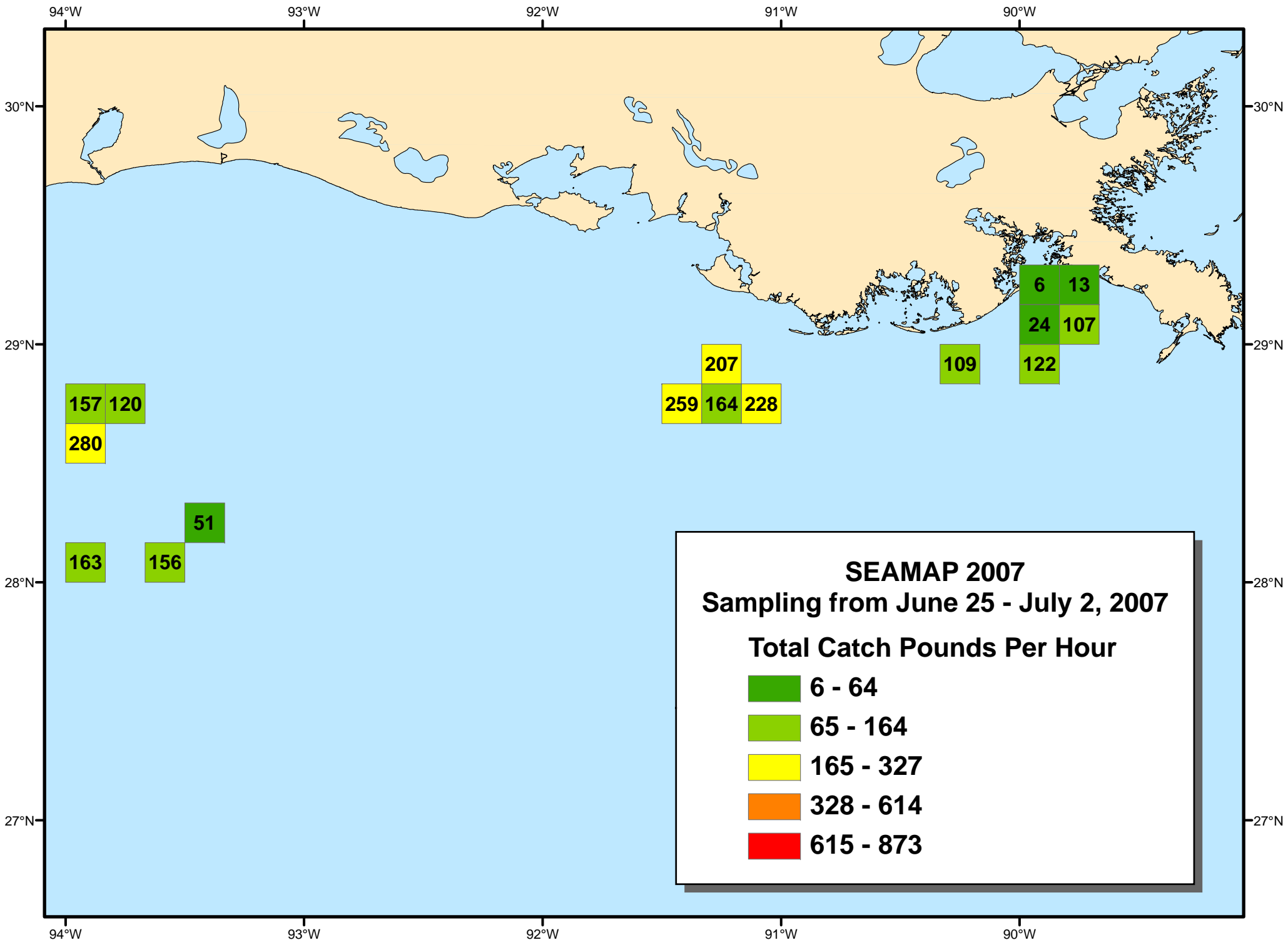


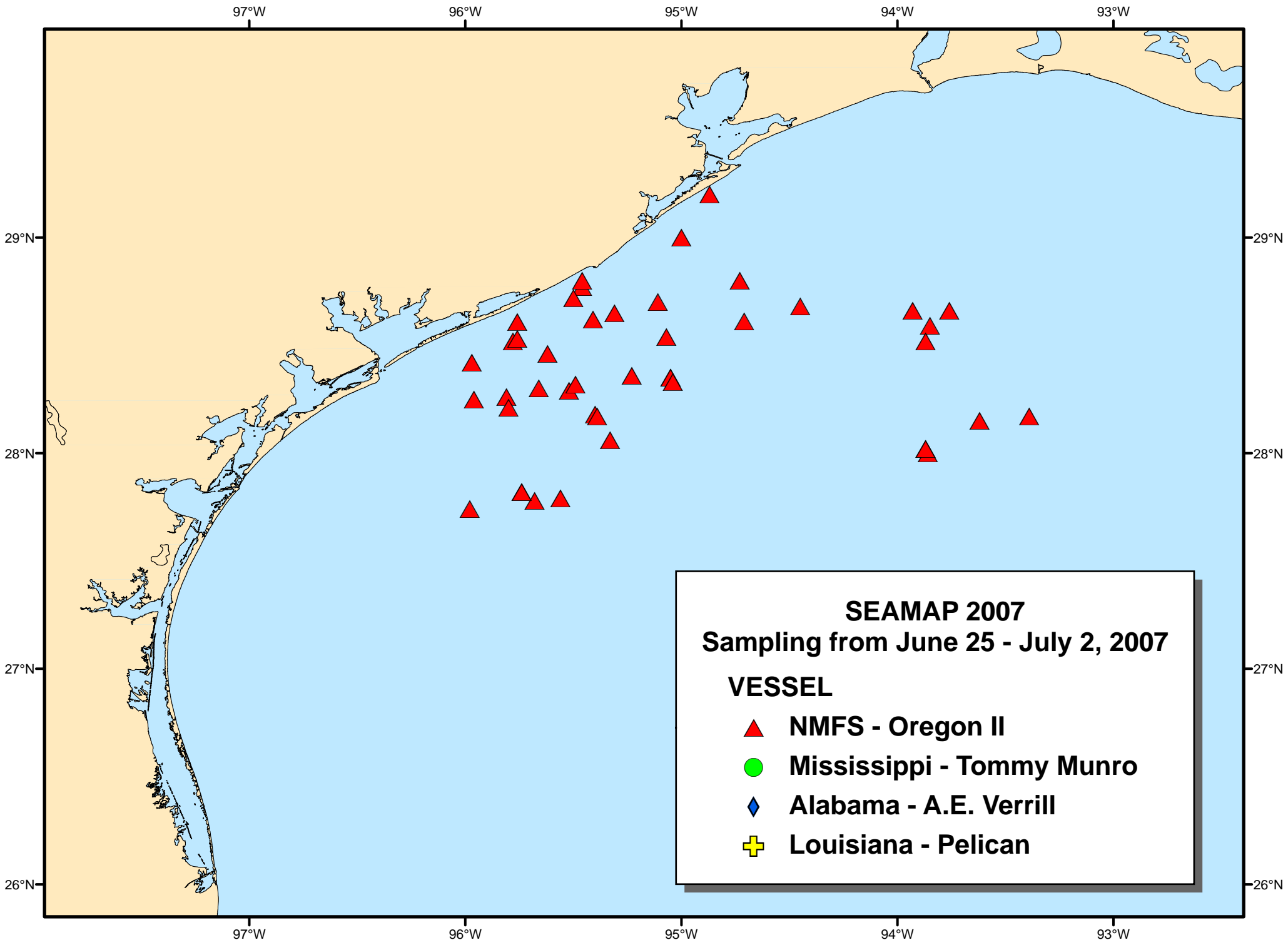
**SEAMAP 2007**

**Sampling from June 25 - July 2, 2007**

**White Shrimp Catch Count Per Pound**

- 8**
- 9**
- 10**
- 11 - 12**
- 13 - 20**





**SEAMAP 2007**  
**Sampling from June 25 - July 2, 2007**

**VESSEL**

- ▲ **NMFS - Oregon II**
- **Mississippi - Tommy Munro**
- ◆ **Alabama - A.E. Verrill**
- + **Louisiana - Pelican**

